

School of

DESIGN & MEDIA

Visualise
Creativity

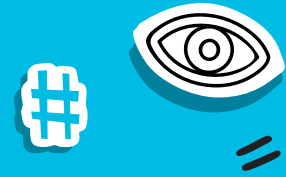
#iteccdesignandmedia



I can make a
difference!

#itecollegcentral





2 Ang Mo Kio Drive Singapore 567720
Tel : 1800 222 2111 / 6590 2211
www.ite.edu.sg/colleges/ite-college-central



ABOUT SCHOOL OF DESIGN & MEDIA

Be the creative craftsman with a real-world portfolio that you have always dreamed of. With a good and strong design foundation at the **School of Design & Media**, we will ensure you are on a great career and academic progression. A niche School of ITE College Central, the **School of Design & Media** will equip you with practical, realistic and versatile design and media skills to put you in good stead to ride with the emerging trends and meet the changing needs of the creative industries.



Nitec in

ARCHITECTURAL TECHNOLOGY



I can make a
difference!

Nitec in Architectural Technology

School of

DESIGN
& MEDIA

Architectural Technology is the application of technology to the design of buildings.

If you have an eye for detail, like drawing and building spaces, **Nitec in Architectural Technology** is the course for you. You will learn the skills and technical knowledge to prepare architectural drawings for submission to relevant authorities, architectural construction & detailing and 3D architectural images using relevant computer software.

YOU WILL LEARN

- Spatial Visualisation Drawing
- Building CAD Drawing
- BIM Presentation
- Architectural Spatial Planning
- Architectural Design & Visualisation
- Building Construction and Drawing
- Architectural Submission
- Model Making
- Prefabricated Construction Drawing
- Construction Quality Assessment System
- Presentation Toolkit for Architecture

CAREER PROSPECTS

- Architectural Draftsperson
- Architectural Technician
- Technical Officer
- Building Project Coordinator

PROGRESSION OPPORTUNITIES

Nitec in Architectural Technology graduates with a Grade Point Average (GPA) of 3.5 and above may apply for progression to the first year of a related diploma course at the Polytechnics.

Nitec in Architectural Technology graduates with a GPA of 2.3 and above may apply for progression to related *Higher Nitec* courses offered by ITE.



ENTRY REQUIREMENTS

GCE 'O' Level grades in any 2 subjects:
Grade 1-8





OR

GCE 'N' Level passes in Mathematics and 2 other subjects:
Grade A-D or Grade 1-5

Note:

- Applicants for this course must ensure that they are free from colour appreciation deficiency.
- Shortlisted applicants will have to attend an interview and aptitude test.

Nitec in DIGITAL ANIMATION



Nitec in Digital Animation

Ever wondered how your favourite animated characters come to life?

In **Nitec in Digital Animation**, you will learn to perform tasks such as character designs, storyboarding, colour & background art, staging and layout. You will also learn to perform post-production tasks like colour correcting, compositing and video editing for animated sequence.

YOU WILL LEARN

- Drawing
- Classical Animation Principles
- Animation Design and Layout
- Essentials of 3D Animation
- Storyboarding
- Asset Creation
- 3D Animation
- Clay Sculpting
- Introduction to Post Production
- Gesture Drawing for Animation

CAREER PROSPECTS

- Junior Concept Artist
- Junior Character Designer
- Junior Storyboard Artist
- Junior Layout Artist
- Junior Background Artist
- Junior Asset Creator
- Junior Animator
- Junior Games Artist
- Junior Lighting Artist
- Junior Texture Artist

PROGRESSION OPPORTUNITIES

Nitec in Digital Animation graduates with a Grade Point Average (GPA) of 3.5 and above may apply for progression to the first year of a related diploma course at the Polytechnics.

Nitec in Digital Animation graduates with a GPA of 2.3 and above may apply for progression to related *Higher Nitec* courses offered by ITE.



ENTRY REQUIREMENTS

Completed GCE 'N' Level
or GCE 'O' Level

Note:

- Applicants for this course must ensure that they are free from colour appreciation deficiency.
- Shortlisted applicants will be required to attend an interview and pass an aptitude test for admission.

Nitec in FASHION APPAREL Production & Design



Nitec in Fashion Apparel Production & Design

Have you thought of how you could conceptualise your fashion design ideas and learn the techniques of producing them?

Nitec in Fashion Apparel Production & Design will equip you with the essential skills to develop and construct clothing for women and men. You will also learn about fashion illustration, fashion development process, textile fundamentals and 3D draping creation.

YOU WILL LEARN

- Fashion Visualisation
- Apparel Construction for Women's Wear
- Textile Fundamentals
- Apparel Construction for Menswear
- 3D Draping Creation
- Fashion Design Practice
- Fashion Production
- Fashion Styling
- Photography Essential

CAREER PROSPECTS

- Prototype Maker
- Pattern Maker
- Assistant Quality Control Specialist
- Assistant Fashion Designer
- Assistant Fashion Merchandiser
- Assistant Fashion Stylist

PROGRESSION OPPORTUNITIES

Nitec in Fashion Apparel Production & Design graduates with a Grade Point Average (GPA) of 3.5 and above may apply for progression to the first year of a related diploma course at the Polytechnics.

Nitec in Fashion Apparel Production & Design graduates with a GPA of 2.3 and above may apply for progression to related *Higher Nitec* courses offered by ITE.

ENTRY REQUIREMENTS

GCE 'O' Level grades in any 2 subjects:
Grade 1-8

OR

GCE 'N' Level passes in Mathematics or Science* and 2 other subjects:
Grade A-D or Grade 1-5

* Mobile Robotics and Smart Electrical Technology subjects can be used in lieu of Science for admission to this *Nitec* course.

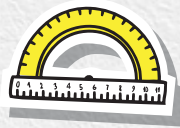
Note:

- Applicants for this course must ensure that they are free from colour appreciation deficiency.
- Applicants applying for this course must attend an interview and pass a drawing/sewing test for admission.
- Successful students will be required to purchase training materials which will cost about \$1,000 for the 2-year course. This is in addition to the course fees. Students can keep their materials at the end of the course.

Nitec in

INTERIOR

& EXHIBITION
Design



I can make a
difference!

Nitec in Interior & Exhibition Design

Have you ever wondered how the interior spaces that we live, work or play in were designed?

In **Nitec in Interior & Exhibition Design**, you will be taught to conceptualise and create interior and exhibition spaces. You will learn how to prepare layout plans, constructional drawings, presentation drawings, illustrations and graphics related to interior & exhibition design, using relevant computer software in this course.

YOU WILL LEARN

- Spatial Visualisation Drawing
- Building CAD Drawing
- Interior Space Modelling
- Space Planning and Design
- Interior Design Proposal
- Construction and Detailing
- Interior Design Portfolio
- Model Making
- Exhibition & Display Modelling
- Construction Quality Assessment System

CAREER PROSPECTS

- Interior Designer
- Interior Stylist
- Interior Project Coordinator
- Exhibition Designer
- Digital Spatial Illustrator

PROGRESSION OPPORTUNITIES

Nitec in Interior & Exhibition Design graduates with a Grade Point Average (GPA) of 3.5 and above may apply for progression to the first year of a related diploma course at the Polytechnics.

Nitec in Interior & Exhibition Design graduates with a GPA of 2.3 and above may apply for progression to related *Higher Nitec* courses offered by ITE.



ENTRY REQUIREMENTS

GCE 'O' Level grades in any 2 subjects:

Grade 1-8

OR

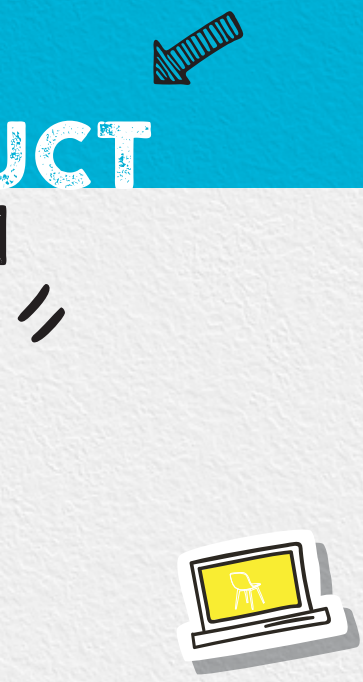
GCE 'N' Level passes in Mathematics and 2 other subjects:

Grade A-D or Grade 1-5

Note:

- Applicants for this course must ensure that they are free from colour appreciation deficiency.
- Shortlisted applicants will have to attend an interview and aptitude test.

Nitec in PRODUCT DESIGN



I can make a
difference!

Nitec in Product Design

Are you creative and like to draw? Have you wondered how you can combine art, science, and technology to create new products that consumers can use?

In **Nitec in Product Design** course, you will learn the fundamental skills in the creation and design of products such as consumer products, lifestyle accessories and furniture for home and living.

YOU WILL LEARN

- Design Foundation Studio
- Computer Aided Design
- Digital Essentials & Corporate Styling
- Materials Exploration
- Design for Manufacturing & Assembly
- Design Studio 1 (Design & Make)
- Design Studio 2 (Design & Market)

CAREER PROSPECTS

- Product Designer
- Product Illustrator
- Prototyping Specialist
- Project Management Executive
- Furniture and Lighting Designer
- Product Developer

PROGRESSION OPPORTUNITIES

Nitec in Product Design graduates with a Grade Point Average (GPA) of 3.5 and above may apply for progression to the first year of a related diploma course at the Polytechnics.

Nitec in Product Design graduates with a GPA of 2.3 and above may apply for progression to related *Higher Nitec* courses offered by ITE.

ENTRY REQUIREMENTS

Completed GCE 'N' Level
or GCE 'O' Level

Note:

- Applicants for this course must ensure that they are free from colour appreciation deficiency.
- Shortlisted applicants will have to attend an interview and aptitude test.

Nitec in VIDEO PRODUCTION



Nitec in Video Production

Be a part of the next generation of video media production professionals.

In **Nitec in Video Production**, you will learn how to support a broad range of functions in the various planning and execution processes of video production. You will be equipped with technical skills such as setting up and operating a video camera and lighting equipment as well as performing sound recording and video editing tasks.

YOU WILL LEARN

- Fundamentals of Video Production
- Video Post-Production
- Production Techniques
- Camera and Lighting Techniques
- Studio Production
- Location Field Production
- Storyboarding for Video Production

CAREER PROSPECTS

- Video Camera Operator
- Lighting Technician
- Video Editor
- Location Coordinator
- Location Sound Recordist
- Production Assistant

PROGRESSION OPPORTUNITIES

Nitec in Video Production graduates with a Grade Point Average (GPA) of 3.5 and above may apply for progression to the first year of a related diploma course at the Polytechnics.

Nitec in Video Production graduates with a GPA of 2.3 and above may apply for progression to related *Higher Nitec* courses offered by ITE.

ENTRY REQUIREMENTS

GCE 'O' Level grades in any 2 subjects:
Grade 1-8

OR

GCE 'N' Level passes in Mathematics or Science* and 2 other subjects:
Grade A-D or Grade 1-5

* Mobile Robotics and Smart Electrical Technology subjects can be used in lieu of Science for admission to this *Nitec* course.

Note:

- Applicants for this course must ensure that they are free from colour appreciation deficiency.
- Shortlisted applicants will have to attend an interview and aptitude test.

Nitec in VISUAL COMMUNICATION



Nitec in Visual Communication

Are you keen to learn how to graphically represent information and convey ideas to a targeted audience?

If this sounds like your cup of tea, join **Nitec in Visual Communication**. You will learn to produce design for print and digital media, such as posters, packaging, web banners and e-magazine layouts. You will be taught illustrations, digital photography and graphic design to convey information through attractive visuals.

YOU WILL LEARN

- Drawing Fundamentals
- Design Principles
- Applied Photography
- Digital Imaging
- Graphics and Typography
- Prepress Technology
- Packaging Design
- Digital Portfolio
- Printmaking Fundamentals
- Digital Illustration
- Lifestyle and Product Photography

CAREER PROSPECTS

- Graphic Designer
- Digital Artist
- Illustrator
- Assistant Photographer

PROGRESSION OPPORTUNITIES

Nitec in Visual Communication graduates with a Grade Point Average (GPA) of 3.5 and above may apply for progression to the first year of a related diploma course at the Polytechnics.

Nitec in Visual Communication graduates with a GPA of 2.3 and above may apply for progression to related *Higher Nitec* courses offered by ITE.

ENTRY REQUIREMENTS

GCE 'O' Level grades in any 2 subjects:
Grade 1-8

OR

GCE 'N' Level passes in English Language and 2 other subjects:
Grade A-D or Grade 1-5

Note:

- Applicants for this course must ensure that they are free from colour appreciation deficiency.
- Shortlisted applicants will have to attend an interview and aptitude test.

Higher Nitec in

ARCHITECTURAL TECHNOLOGY



I can make a
difference!

Higher Nitec in Architectural Technology

School of

DESIGN & MEDIA

Have you wondered how a house or a building is planned, designed and coordinated?

In **Higher Nitec in Architectural Technology**, you will learn to develop architectural detailing and specifications, prepare architectural project documentation and ensure compliance with industry standards, codes and regulations, through the use of appropriate technology and efficient flow of information within an organisation.

YOU WILL LEARN

- Architectural Drawing
- Architectural Modelling
- Architectural Design Process
- Architectural Construction Technology
- Architectural BIM Design
- Green Mark and Universal Design
- Architectural Visualisation
- Visual Perception of Architecture

CAREER PROSPECTS

- Architectural Technical Officer
- Architectural Technical Coordinator
- Architectural Technologist
- Architectural Building Information Modelling (BIM) Coordinator
- Architectural Project Coordinator

PROGRESSION OPPORTUNITIES

Higher Nitec in Architectural Technology graduates with a Grade Point Average (GPA) of 2.0 and above may apply for progression to the first year of a related diploma course at the Polytechnics.



ENTRY REQUIREMENTS

GCE 'O' Level grades in English Language, Mathematics and 1 approved subject:

Grade 1-8 in English Language

Grade 1-7 in Mathematics (Elementary/Additional)

Grade 1-8 in an approved subject:

Biology / Biotechnology / Chemistry / Combined Science / Computing / Computer Studies / Design & Technology / Electronics / Fundamentals of Electronics / Human & Social Biology / Integrated Science / Physics / Engineering Science / Science (Chemistry, Biology) / Science (Physics, Biology) / Science (Physics, Chemistry) / Physical Science / Science (Physics, Biology, Chemistry)

Note:

Applicants for this course must ensure that they are free from colour appreciation deficiency.

Higher Nitec in FILMMAKING (Cinematography)



Higher Nitec in Filmmaking (Cinematography)

Be a part of the exciting world of movies and entertainment productions.

In **Higher Nitec in Filmmaking (Cinematography)**, you will learn the craft of cinematography through hands-on practical instruction, with focus on camera, lighting and grip skills to achieve the required technical standards of motion-picture production setups, as well as in television drama and commercial productions.

YOU WILL LEARN

- Filmmaking Fundamentals
- Camera Technology
- Production Coordination and Post
- Camera Movement and Lighting
- Production Aesthetics and Lighting Techniques
- Applied Cinematography
- Audio for Video

CAREER PROSPECTS

- Digital Cine Camera Operator
- 1st and 2nd Assistant Camera
- Data Wrangler
- Lighting Crew
- Post-Production Assistant
- Dolly Grip
- Production Coordinator
- Production Assistant
- Production Grip

PROGRESSION OPPORTUNITIES

Higher Nitec in Filmmaking (Cinematography) graduates with a Grade Point Average (GPA) of 2.0 and above may apply for progression to the first year of a related diploma course at the Polytechnics.



ENTRY REQUIREMENTS

GCE 'O' level grades in English Language, Mathematics/Principles of Accounts and 1 other subject:

Grade 1-7 in English Language

Grade 1-8 in Mathematics (Elementary/Additional) or Principles of Accounts*

Grade 1-7 in one other subject

* To be eligible for selection, you must also have sat for Mathematics (Elementary/Additional).

Note:
Applicants for this course must ensure that they are free from colour appreciation deficiency.

Higher Nitec in INTERACTIVE DESIGN



I can make a
difference!

Higher Nitec in Interactive Design

School of

DESIGN
& MEDIA

Be part of the web experience team!

Higher Nitec in Interactive Design provides you with the skills and knowledge of creating engaging web experiences with logical, thought out behaviours and actions, user experience design for digital marketing and developing of responsive websites.

YOU WILL LEARN

- Visual Design Principles
- Digital Photography and Imaging
- Web Design and Development
- Digital Content Creation
- Content Management System Essentials
- Responsive Web Design
- User Experience Design Essentials
- Screen Typography
- Infographic Design

CAREER PROSPECTS

- Interactive Designer
- Web Designer
- UI/UX Designer
- Digital Designer

PROGRESSION OPPORTUNITIES

Higher Nitec in Interactive Design graduates with a Grade Point Average (GPA) of 2.0 and above may apply for progression to the first year of a related diploma course at the Polytechnics.



ENTRY REQUIREMENTS

GCE 'O' Level grades in English Language, Mathematics or Principles of Accounts and 1 other subject:

Grade 1-8 in English Language

Grade 1-7 in Mathematics (Elementary/Additional) or Principles of Accounts*

Grade 1-8 in one other subject

* To be eligible for selection, you must also have sat for Mathematics (Elementary/Additional).

Note:

Applicants for this course must ensure that they are free from colour appreciation deficiency.

Higher Nitec in MOTION GRAPHICS



I can make a
difference!

Higher Nitec in Motion Graphics

School of

DESIGN
& MEDIA

Be part of a new breed of design creators in the fast growing field of motion graphics.

Learn to design your own title sequence or interesting graphic animation through **Higher Nitec in Motion Graphics**. You will pick up skills and knowledge to combine graphic animation, live footages and audio elements to create engaging motion visuals for various visual communication purposes.

YOU WILL LEARN

- Digital Imaging Essentials
- Design Principles
- Motion Design
- 3D Fundamentals
- Finishing for Motion Graphics
- 3D for Motion Graphics
- Motion Graphics Portfolio

CAREER PROSPECTS

- Motion Graphics Artist
- Broadcast Designer
- Animator
- Assistant Video Editor
- TV & Film Graphic Artist

PROGRESSION OPPORTUNITIES

Higher Nitec in Motion Graphics graduates with a Grade Point Average (GPA) of 2.0 and above may apply for progression to the first year of a related diploma course at the Polytechnics.



ENTRY REQUIREMENTS

GCE 'O' Level grades in English Language and 2 other subjects:

Grade 1-7 in English Language

Grade 1-8 in any two other subjects

To be eligible for selection, you must also have sat for Mathematics (Elementary/Additional).

Note:

Applicants for this course must ensure that they are free from colour appreciation deficiency.

Higher Nitec in PERFORMANCE PRODUCTION



I can make a
difference!

Higher Nitec in Performance Production

Be a part of a dynamic production team for theatre and live events.

Higher Nitec in Performance Production will equip you with the right management and technical skills to ensure the smooth running of a live performance. In addition to learning how to coordinate the production backstage, you will also learn how to set up and operate the lights, sound, multimedia and staging systems.

YOU WILL LEARN

- Performance Production Management
- Lighting for Production I
- Sound for Production I
- Stage Craft and Staging Systems
- Visual Multimedia
- Lighting for Production II
- Sound for Production II

CAREER PROSPECTS

- Lighting Technician
- Sound Technician
- Staging Technician
- Multimedia Technician
- Production Operator
- Production Crew
- Wardrobe Assistant & Dresser
- Junior Carpentry
- Assistant Stage Manager
- Stage Manager

PROGRESSION OPPORTUNITIES

Higher Nitec in Performance Production graduates with a Grade Point Average (GPA) of 2.0 and above may apply for progression to the first year of a related diploma course at the Polytechnics.



ENTRY REQUIREMENTS

GCE 'O' Level grades in English Language, Mathematics and 1 other subject:

Grade 1-7 in English Language

Grade 1-8 in Mathematics (Elementary/Additional) or Principles of Accounts*

Grade 1-7 in one other subject

* To be eligible for selection, you must also have sat for Mathematics (Elementary/Additional).

Note:

Applicants for this course must ensure that they are free from colour appreciation deficiency and fear of heights.

Higher Nitec in VISUAL EFFECTS



I can make a
difference!

Higher Nitec in Visual Effects

School of

DESIGN
& MEDIA

Have you ever thought of how the magic in movies are created?

Higher Nitec in Visual Effects will unravel the magic of creating spectacular visual effects for the exciting media & entertainment industry. You will learn how to create computer graphics elements and combine them with live-action to create a photo-realistic video sequence that will result in a visual treat for the audience.

YOU WILL LEARN

- Digital Effects Essentials
- 3D Modelling
- Texturing, Lighting and Rendering
- Digital Sculpting
- Matchmoving and Rotoscoping
- Dynamic FX
- Compositing

CAREER PROSPECTS

- Visual Effects Artist
- Pre-visualisation artist
- 3-D Modeller
- Texture Artist
- Lighter
- 3D Tracking Composer
- Rotoscoping Artist
- Compositor

PROGRESSION OPPORTUNITIES

Higher Nitec in Visual Effects graduates with a Grade Point Average (GPA) of 2.0 and above may apply for progression to the first year of a related diploma course at the Polytechnics.



ENTRY REQUIREMENTS

GCE 'O' Level grades in English Language, Mathematics/ Principles of Accounts and 1 approved subject:

Grade 1-8 in English Language

Grade 1-7 in Mathematics (Elementary/Additional) or Principles of Accounts*

Grade 1-8 in one other subject

* To be eligible for selection, you must also have sat for Mathematics (Elementary/Additional).

Note:

Applicants for this course must ensure that they are free from colour appreciation deficiency.

Higher Nitec in VISUAL MERCHANDISING



Higher Nitec in Visual Merchandising

If you have a keen eye for the aesthetics, **Higher Nitec in Visual Merchandising** is the course for you.

Visual Merchandising is the art of displaying merchandise that appeals to the eyes of the consumer. You will learn how to use different media forms to conceptualise and create unique window and in-store displays to capture consumers' imagination and enhance their shopping experiences.

YOU WILL LEARN

- Arts and Design
- Communication at Work
- Visual Merchandising Graphics
- Retail Marketing
- Visual Merchandising Design
- Retail Space Design
- Applied Visual Merchandising

CAREER PROSPECTS

- Visual Merchandiser
- Display Artist
- Retail Stylist
- Events Designer

PROGRESSION OPPORTUNITIES

Higher Nitec in Visual Merchandising graduates with a Grade Point Average (GPA) of 2.0 and above may apply for progression to the first year of a related diploma course at the Polytechnics.



ENTRY REQUIREMENTS

GCE 'O' Level grades in English Language and 2 other subjects:

Grade 1-7 in English Language

Grade 1-8 in two other subjects

To be eligible for selection, you must have sat for Mathematics (Elementary/Additional).

Note:

Applicants for this course must ensure that they are free from colour appreciation deficiency.