

WHAT'S YOUR

School of Design & Media

R - Realistic
A - Artistic
E - Enterprising



Creative Arts & Fashion Industry

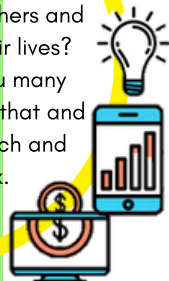
Express your individuality in the various aspects of the creative industry. Knowing how to synthesise technology and ideology is as important as having good aesthetic sense in this industry.

School of Business & Services

A - Artistic
S - Social
E - Enterprising

Social & Personal Services

Love to connect with others and make an impact in their lives? This industry offers you many opportunities to do just that and add that personal touch and flair to your work.



Info-comm Technology

Knowledge of computers and coding will give you the fundamentals. It's really all about understanding people's problems and using technology to make everyday lives easier and better.



School of Electronics & Info-Comm Technology

R - Realistic
I - Investigative
C - Conventional



Engineering

For practical and logical individuals who love problem-solving. Those who like working with people can also gain satisfaction in finding solutions to real-world problems.



School of Engineering

R - Realistic
I - Investigative
C - Conventional



RIASEC CODES