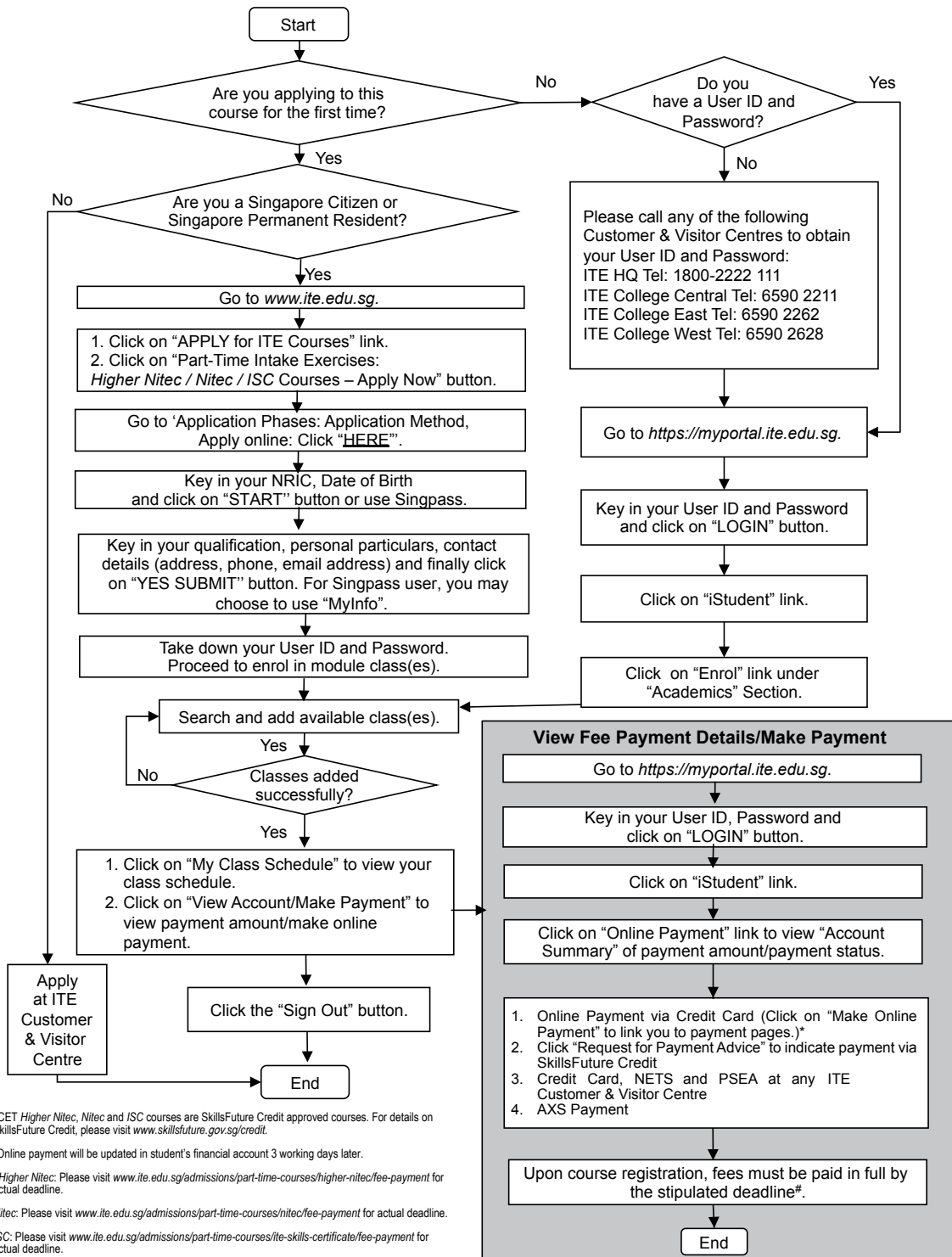


WEB APPLICATION GUIDE[^]



[^]CET Higher Nitec, Nitec and ISC courses are SkillsFuture Credit approved courses. For details on SkillsFuture Credit, please visit www.skillsfuture.gov.sg/credit.

*Online payment will be updated in student's financial account 3 working days later.

[#]Higher Nitec: Please visit www.ite.edu.sg/admissions/part-time-courses/higher-nitec/fee-payment for actual deadline.

Nitec: Please visit www.ite.edu.sg/admissions/part-time-courses/nitec/fee-payment for actual deadline.

ISC: Please visit www.ite.edu.sg/admissions/part-time-courses/ite-skills-certificate/fee-payment for actual deadline.