



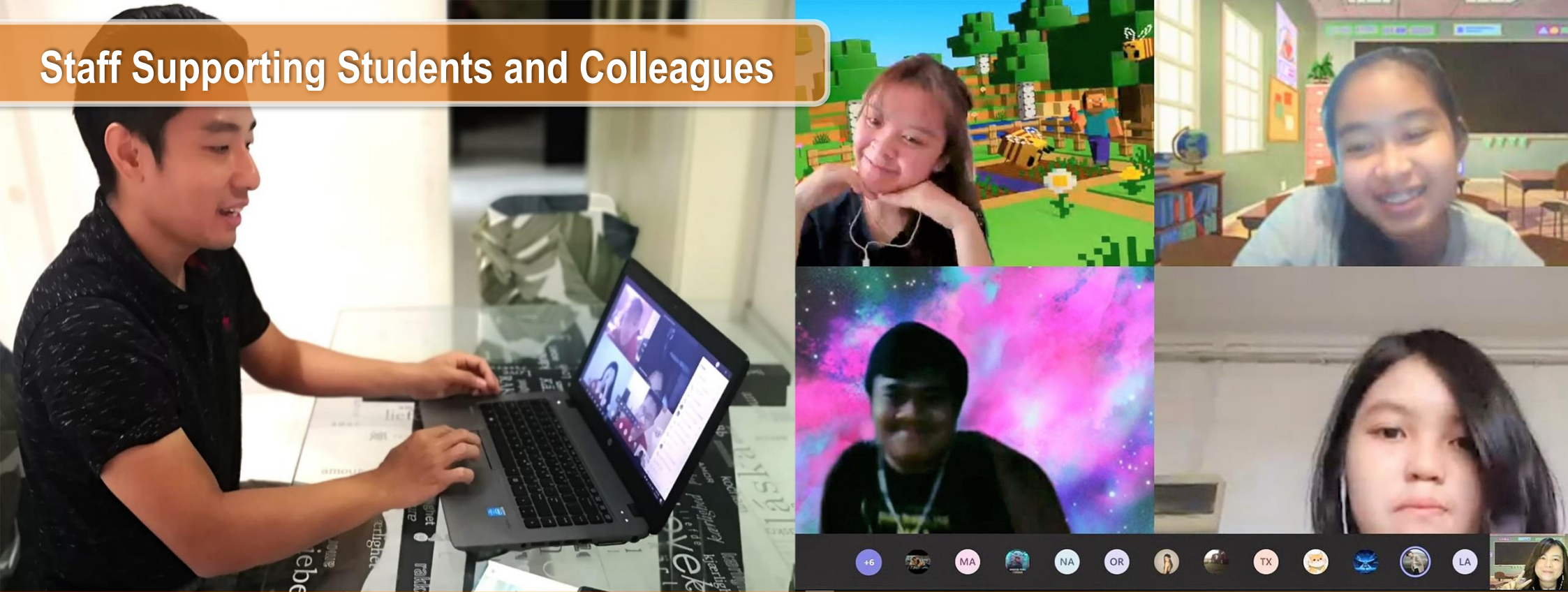
Stronger Together

The outbreak of the coronavirus disease 2019 (COVID-19) has left a far-reaching impact globally. For Singapore, it has been a long and hard fight which has tested not just our healthcare system and economy, but also our social capital as a nation.

Since the outbreak of the virus, our frontline workers and volunteers have been working tirelessly. Many Singaporeans have been supporting the community through acts of kindness, such as preparing free meals for the needy. All these reflect our shared sense of resilience and solidarity as a nation in this crisis.

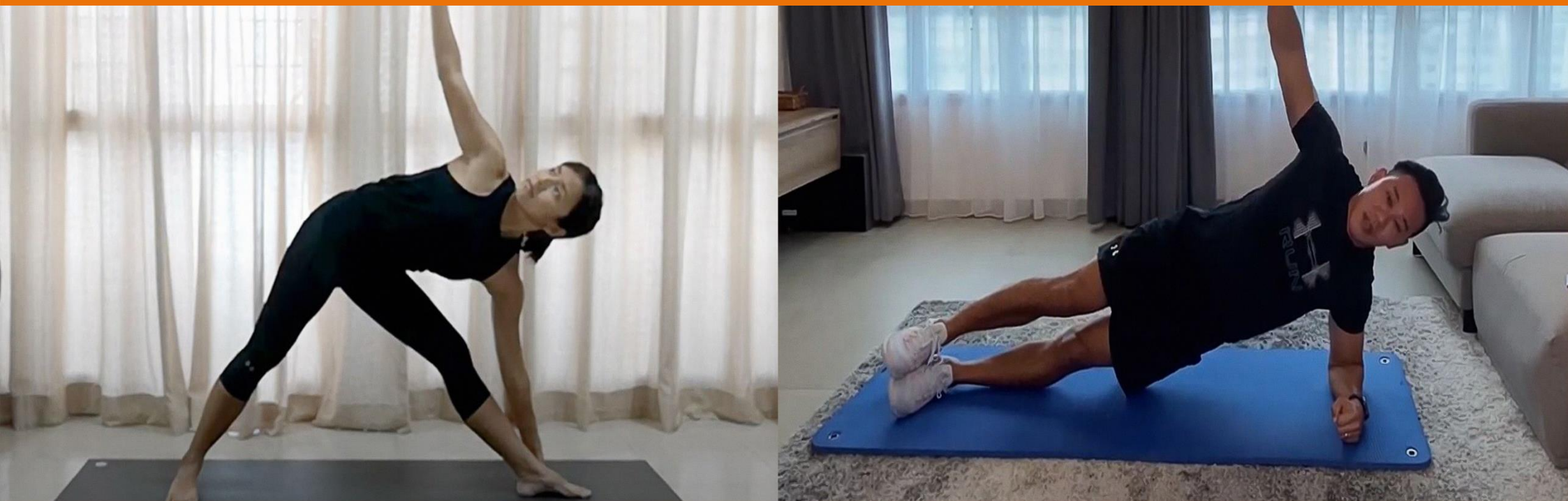
It is also the same spirit which has unified the ITE community, as we grapple with changing circumstances and disruptions to the ways we work and learn.

Staff Supporting Students and Colleagues



Lecturers and their students during home-based learning

Even with the closure of schools, our staff have continued to give their best efforts in supporting and caring for the students through this challenging period. To ensure that students can continue with their learning, our lecturers have been working hard to deliver home-based teaching. Many have shown great dedication and adaptability, as they quickly learnt to familiarise themselves with new digital learning tools.



ITE PE lecturers in the exercise videos

Beyond teaching, our staff have also used digital platforms to show care for their students and colleagues in innovative ways. For instance, a group of Physical Education (PE) lecturers created a series of exercise videos on social media to help students and fellow colleagues stay healthy at home.

The same PE department also initiated an e-sports competition for students, where they could compete in popular video games outside of lesson time. The competition sought to raise funds for students with financial challenges, as accumulated points from players will be converted to cash by a donor company.

Another group of lecturers also produced a video on social media, expressing their motivation to support their students through home-based teaching.

Students, Graduates and Staff Supporting the Community



(From left) Imran serving as a Safe Distancing Ambassador; Imran in school

More significantly, many of our students, graduates and staff have stepped up to support the community in this difficult period.

One such student is Muhamad Imran. A volunteer at Woodlands Community Club, Imran had assisted members of the public to fill in application forms for the Temporary Relief Fund. He has also been serving as a Safe Distancing Ambassador, guiding members of the public on safe distancing measures. Imran considers such efforts as his way of giving back to the community.



(Clockwise from top left) Distributing fruits to a bus captain; sharing words of encouragement with the cleaners of Ang Mo Kio Town Council; conveying words of support for frontline workers; all smiles in volunteering to distribute free reusable masks; producing a song to inspire optimism; visiting the hospital to distribute gifts to healthcare workers

Efforts by other students included volunteering to distribute free reusable masks, as well as putting together "care packages" and appreciation videos for frontline workers. The ITE Show Choir also produced a rendition of the classic song, "I'll Be There", which they shared on social media to inspire optimism in the community.

Some ITE graduates who are former nurses volunteered for the SG Healthcare Corps initiative, where they will be deployed to support frontline nurses in the COVID-19 fight.



(From left) Chui Ping sewing the masks; some of her completed masks

A lecturer, Choong Chui Ping, and a group of friends learned to sew reusable masks for distribution to the public. This was spurred by her desire to help people who do not have ready access to masks, including the elderly. Her group also partnered local tailor CYC to sew reusable masks for foreign workers.

Upon learning that some of her students' families have been facing financial difficulties due to the COVID-19 situation, another lecturer, Phoebe Sim, single-handedly raised \$12,700 in cash donations to support these students. She raised these funds from her friends and their contacts.



#StayHome #StaySafe

Safety messages and practices by students

The selfless care of our students, graduates and staff for the community is something we can all learn from and be proud of. It teaches us to look beyond ourselves to build compassion for others. Most importantly, it reminds us that we are not alone in this fight, and that the only way to overcome this crisis is together.

We hope this is the spirit that would encourage you to lend a supporting hand to our needy students, whose families have been significantly affected by the COVID-19 pandemic. Your support will help to tide them through this difficult period, and allow them to focus on their studies without worrying about daily expenses. More information can be found at: **tiny.cc/itecares-giving**.

Let us continue to stand in solidarity, with strength, humanity and kindness. Together, we are stronger.

Editor

Hans Yeo, Corporate & Media Relations Officer

Editorial Team

Chua Ai Lian, Divisional Director, Corporate Affairs & Development Division; Mathusuthan P, Deputy Director, Communications & Marketing, Corporate Affairs & Development Division; Jailani Nathan, Manager, Corporate & Media Relations

Links: [ITE Lecturer Volunteering to Sew Masks for Public & Foreign Workers >>](#)
[ITE Students Volunteering to Distribute Reusable Masks to Public >>](#)
[Exercise Video Series by PE Department of ITE College Central >>](#)
[Video by ITE Lecturers on their Motivations for Home-Based Teaching >>](#)
[ITE Show Choir's Rendition of "I'll Be There" >>](#)
[Safety Messages and Practices by Students >>](#)
[Safety Messages and Practices by Staff >>](#)
[ITE Student Volunteering to Help Public with Temporary Relief Fund Applications >>](#)
[ITE Students Distributing Fruits to Public Transport Workers and Cleaners >>](#)
[ITE Students Distributing Care Packs for Cleaners, Stallholders & Technicians on Campus >>](#)
[ITE Students Distributing Gifts & Encouragement Messages to Healthcare Workers >>](#)
[ITE Students Showing Appreciation to Service Workers on Campus >>](#)
[Video by ITE Students to Thank Frontline Staff >>](#)