



CW Uniform Sales

School of Business & Services (SBS)



| Uniform | Price Per Piece |
|-------------------------|-----------------|
| Female Top | \$10 |
| Female Pants | \$11 |
| Female Dress (optional) | \$20 |
| Male Shirt | \$12 |
| Male Pants | \$11 |

School of Business & Services (SBS)



*Higher Nitec in
Sport Management*

| Uniform | Price Per Piece |
|---------------------------|-----------------|
| Unisex Polo T-Shirts (SM) | \$10.10 |
| Unisex Track Pants | \$12.10 |

School of Electronics & Info-Comm Technology (SEIT)



| Uniform | Price Per Piece |
|-------------------------|-----------------|
| Female Top | \$10 |
| Male Top | \$10 |
| Female Skirt (optional) | \$8 |
| Female Pants | \$11 |
| Male Pants | \$11 |

School of Engineering (SOE)



| Uniform | Price Per Piece |
|-------------------|-----------------|
| Female Top | \$10 |
| Male Top | \$10 |
| Unisex Cargo Pant | \$12 |

School of Engineering (SOE)

Workshop Attire



Unisex Short Sleeve Top

| Uniform | Price Per Piece |
|---------------------|-----------------|
| Unisex Short Sleeve | \$12.70 |
| Unisex Cargo Pant | \$12 |

School of Engineering (SOE)



| Uniform | Price Per Piece |
|-------------------------------------|-----------------|
| Blue Glass Unisex Shirt | \$19.60 |
| Unisex Dark Navy Blue - Cargo Pants | \$12 |

Technical Engineer Diploma in Automotive Engineering

School of Hospitality (SOH)



*Higher Nitec in
Hospitality Operations*

*Nitec in Hospitality
Operations*

| Uniform | Price Per Piece |
|-------------------------|-----------------|
| Female Top | \$10 |
| Female Pants | \$11 |
| Female Dress (optional) | \$20 |
| Male Top | \$12 |
| Male Pants | \$11 |
| Male Tie (Black) | \$5 |

School of Hospitality (SOH)



Note *

ACA – *Nitec* in Asian Culinary Arts

WCA -*Nitec* in Western Culinary Arts

PBK – *Higher Nitec & Nitec*
in Pastry & Baking

CLA - *Higher Nitec in* Culinary Arts

CAR - Technical Diploma Culinary Arts

HPO – *Nitec & Higher Nitec* in
Hospitality Operations

| Uniform | Price Per Piece |
|--|-----------------|
| Male & Female Chef Coat (ACA/WCA/CLA/PBK) | \$15.30 |
| Half-Length Apron (ACA/WCA/CLA) | \$8.10 |
| Full-Length Apron (PBK/CAR) | \$8.10 |
| Chef Hat - Maroon (ACA/WCA/PBK) | \$5.80 |
| Chef Hat - Black (HNitec PBK/CLA) | \$5.80 |
| Male & Female Chef Pants (ACA/WCA/CLA/PBK/CAR) | \$21.80 |
| Male & Female Chef Coat (CAR) | \$22.90 |
| ¾ Length Apron (HPO) | \$9.80 |

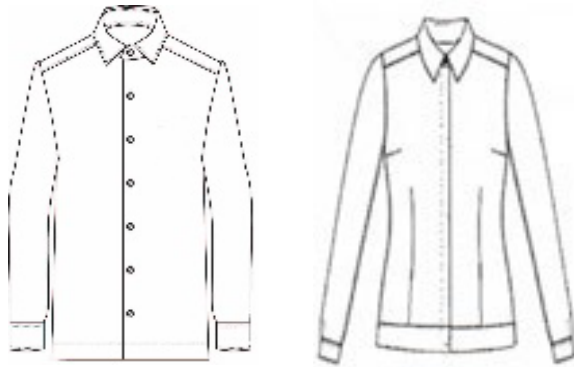
School of Hospitality (SOH)



| Uniform | Price per Piece |
|--------------------------|-----------------|
| Male & Female Chef Coat | \$22.90 |
| Male & Female Chef Pants | \$21.80 |
| Full-Length Apron | \$8.10 |

Technical Diploma in Culinary Arts with Restaurant Management

School of Hospitality (SOH)



| Uniform | Price Per Piece |
|--------------------------------------|-----------------|
| Male & Female Pants | \$11.00 |
| Male Shirt (Long Sleeve/Off White) | \$22.90 |
| Female Shirt (Long Sleeve/Off White) | \$22.90 |
| Blazer (Male/Cool Grey) | \$39.20 |
| Blazer (Female/Cool Grey) | \$39.20 |

Technical Diploma in Hospitality & Hotel Management



PE Attire

Common for all Schools

1. Yellow Stripe: SBS
2. Green Stripe: SEIT
3. Orange Stripe: SOE
4. Maroon Stripe: SOH

| Uniform | Price Per Piece (Top or Shorts) |
|-----------|---------------------------------|
| PE Attire | \$5.05 |