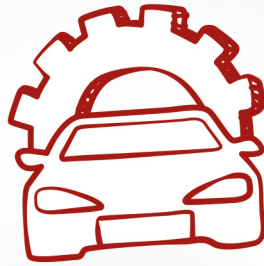


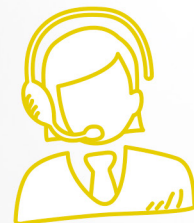


# ITE Traineeship

YOUR PATHWAY  
TO SUCCESS



ITE



A fulfilling 2-year  
Earn-as-You-Learn programme



Designed for GCE 'N' and 'O' Levels  
graduates to pursue nationally-recognised  
*Nitec* and *Higher Nitec* qualifications  
through hands-on training



# What is Traineeship?

Do you learn better and faster through  
work-study experience? Do you prefer  
to be working instead of being in a  
classroom all the time? A traineeship  
pathway may be the option for you!



Pick up actual On-the-Job  
competencies under the  
guidance of qualified  
supervisors at company



Acquire theory and practical  
knowledge from ITE or at an  
ITE Approved Training Centre

## WHY CHOOSE TRAINEESHIP?



Gain a  
headstart in  
your career



Accumulate  
relevant  
working  
experience



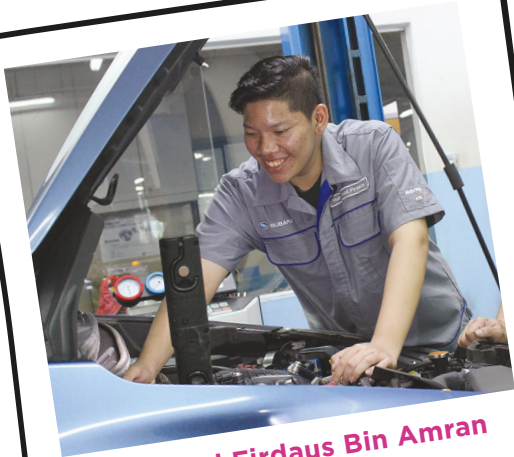
Receive a full  
sponsorship  
of your  
course fees



Receive the  
same National  
ITE Certificate  
as full-time  
ITE graduates



Receive  
salaries, CPF  
and enjoy  
employee  
benefits



**Muhammad Firdaus Bin Amran**  
Nitec in Automotive Technology  
(Light Vehicles), Motor Image  
Enterprise Pte Ltd

“

I chose to join Traineeship programme as I work and learn better **hands-on**. It also exposed me to the **real working environment** so that I could be more **ready and prepared** for the workforce.

The experience so far is certainly an **eye opener**!

Besides picking up skills and knowledge outside of school, my job experience definitely gives me an **upper hand** in the future.

“

Thanks to this Traineeship programme and my company, I was able to learn **actual work skills** and also merits and faults about myself, which helped me become a **better person**.

Compared to graduates from full-time studies, I have a **career head start** and I felt more prepared for related job roles!



**Jayson Chang**  
Nitec in Infocomm Technology  
Alphawave Technology (S) Pte Ltd

“

Traineeship allows me to study, learn and accumulate skills beyond the 2 years of training.

Through this Traineeship programme, I become more **independent** and am now better at **managing time** and **multi-tasking**. Not only that, I also learnt to **control my finances** when I receive my monthly salary.

While it is tough to work and study at the same time, I feel more **confident** as I take on more responsibilities in my job and show others my potential!



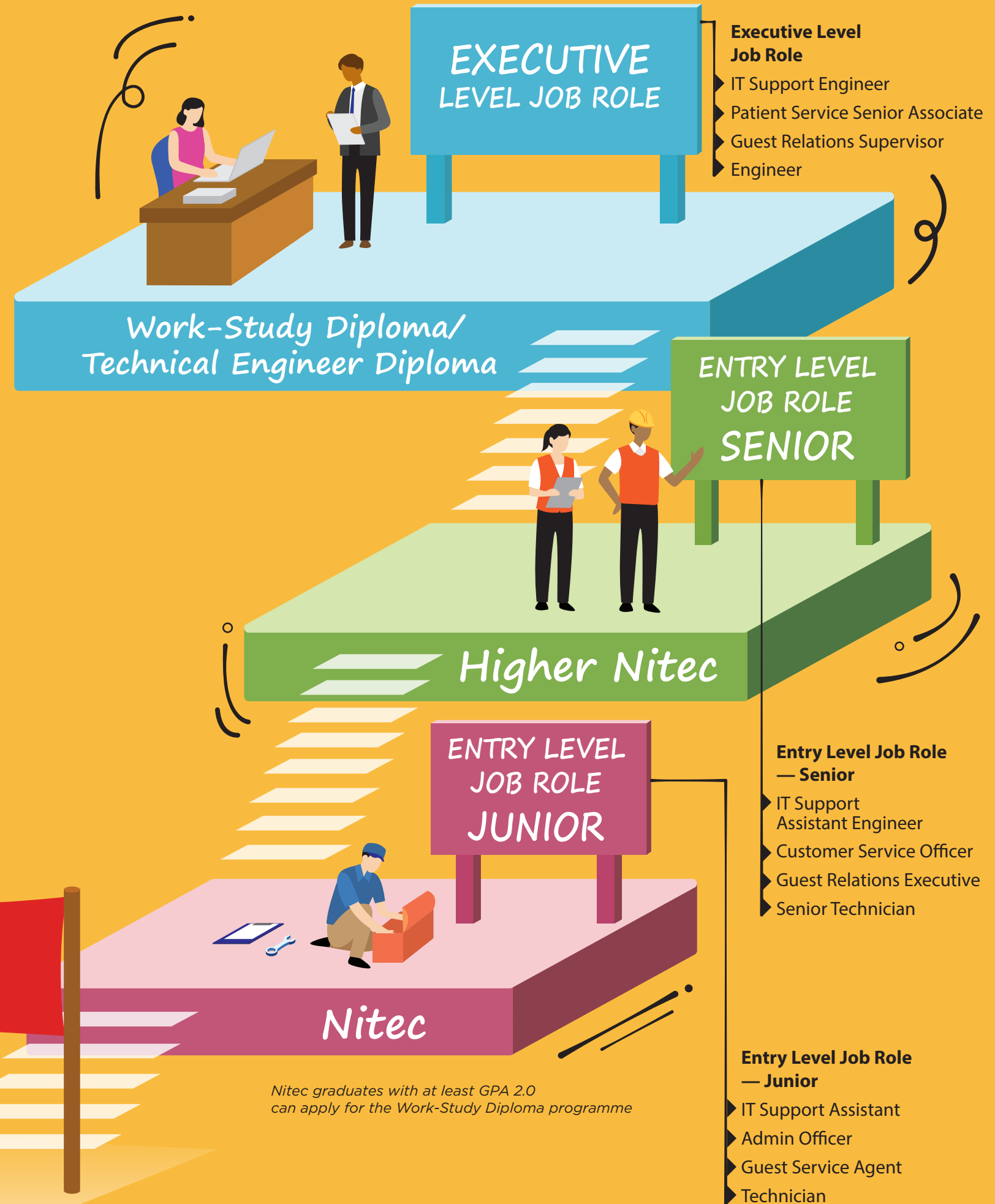
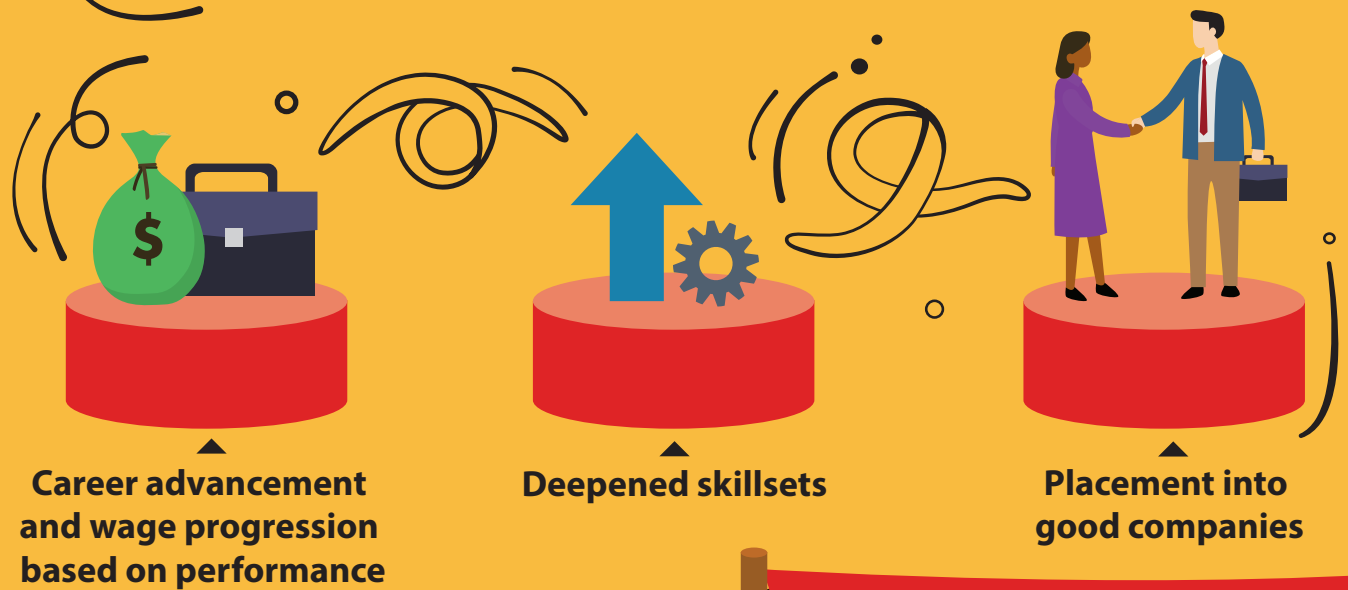
**Ruthra Vaitheshwari D/O  
Thiagarajen**  
Higher Nitec in Service Management  
inCall Systems Pte Ltd



# Career Pathway

Curious about what you can do after graduating from Traineeship? Planning ahead for further studies and want to find out all the available options?

ITE offers Diploma courses to further deepen your skills and knowledge through Learning-by-Doing, so that you can continue to progress in your career and seek nationally-recognised Diploma qualifications. Our Diploma programmes are open to *Nitec* and *Higher Nitec* graduates.





# Contents

## AUTOMATION



- 07 *Nitec* in Mechatronics & Robotics

## DESIGN & MEDIA



- 18 *Nitec* in Visual Communication

## AUTOMOTIVE



- 08 *Nitec* in Automotive Technology  
08 *Nitec* in Motorcycle Technology  
09 *Higher Nitec* in Automotive Engineering

## HEALTH CARE



- 19 ITE Skills Certificate (ISC) in Health Care (Home Care)  
19 *Nitec* in Dental Assisting  
20 *Nitec* in Dental Technology  
21 *Nitec* in Community Care & Social Services

## BEAUTY & WELLNESS



- 10 *Nitec* in Beauty & Wellness  
11 *Nitec* in Hair Fashion & Design

## HOSPITALITY



- 22 *Nitec* in Hospitality Operations  
23 *Nitec* in Asian Culinary Arts  
24 *Nitec* in Western Culinary Arts

## BUILDING SERVICES



- 12 *Nitec* in Built Environment (Mechanical & Electrical Services)  
13 *Nitec* in Built Environment (Vertical Transportation)  
14 *Nitec* in Lift & Escalator Technology

## INFOCOMM TECHNOLOGY



- 25 *Nitec* in Infocomm Technology

## BUSINESS & SERVICES



- 15 *Nitec* in Business Services  
16 *Nitec* in Retail Services  
17 *Higher Nitec* in Service Management

## MARINE FABRICATION



- 26 *Nitec* in Fabrication Technology (Hull & Structures)  
26 *Nitec* in Fabrication Technology (Marine Pipe)  
27 *Nitec* in Marine Technology  
27 *Nitec* in Marine Electrical Technology  
28 *Higher Nitec* in Marine & Offshore Technology



# Nitec in Mechatronics & Robotics



## WHY THIS COURSE?

- You like to play with motor parts and carry out troubleshooting and testing of electrical and electronic systems. You are interested to learn about predictive maintenance.
- You aspire to make a difference to manufacturing processes and want to be part of the evolutionary Industry 4.0 in the future.
- Singapore planned to roll out driverless car/buses on the road by 2020. If you are amazed with autonomous machines such as automated guided vehicles, driverless cars/buses and robots, this course will lay the foundation for you!

## ESTIMATED SALARY RANGE

\$1,100 - \$1,400



## WHO CAN APPLY?

Singapore Citizens or Permanent Residents with:

GCE 'O' Level grades in any  
2 subjects (Grade 1 - 8)

or

GCE 'N' Level passes in Mathematics  
or Science\* and 2 other subjects  
(Grade A - D or 1 - 5)

*\*Mobile Robotics and Smart Electrical Technology subjects can be used in lieu of Science for admission to this Nitec course.*

*Applicants for this course must ensure that they are free from colour appreciation deficiency.*

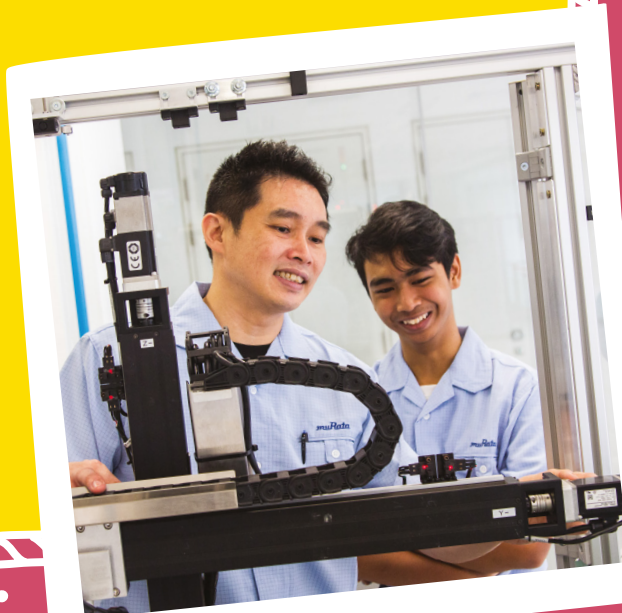
## POTENTIAL SPONSORING COMPANIES

- Manufacturing companies
- Automation and servicing companies
- Machining and fabrication workshops



## UPON GRADUATION, BE EMPLOYED AS

- Automation Technician
- Automated Equipment Maintenance Technician
- Mechatronics Technician





# Nitec in Automotive Technology\*



## WHY THIS COURSE?

- You love vehicles.
- You like to tinker with and repair motor systems.

## POTENTIAL SPONSORING COMPANIES

- Fleet maintenance workshops
- Public transport companies
- Distributors of passenger and commercial vehicles
- Service garages
- Franchised motor dealers
- Vehicle inspection centres
- Government agencies

## ESTIMATED SALARY RANGE

\$1,200 - \$1,500



## UPON GRADUATION, BE EMPLOYED AS

- Truck or Bus Service Technician
- Diesel Engine Service Technician
- Motor Vehicle Service Technician
- Service Adviser
- Vehicle Inspector



*This course is also offered as Nitec in Automotive Technology (Light Vehicles) at ITE Approved Training Centre.*

# Nitec in Motorcycle Technology



## WHY THIS COURSE?

- You love motorcycles.
- You like to tinker with and repair motor systems.

## POTENTIAL SPONSORING COMPANIES

- Motorcycle dealers
- Service garages

## ESTIMATED SALARY RANGE

\$1,200 - \$1,400



## UPON GRADUATION, BE EMPLOYED AS

- Motorcycle Service Technician
- Service Adviser



## WHO CAN APPLY?

Singapore Citizens or Permanent Residents who have completed GCE 'N' or GCE 'O' Level

*Applicants for this course must ensure that they are free from colour appreciation deficiency*





# Higher Nitec in Automotive Engineering



## WHY THIS COURSE?

- You love vehicles and are a fan of cars.
- You are inquisitive and want to acquire deep knowledge about various automotive technologies.
- Singapore sees a spike in electric and hybrid transportation options. You want to know about how electric and hybrid vehicles work in comparison to the traditional combustible engine cars.
- You like to tinker with and repair motor systems.

## POTENTIAL SPONSORING COMPANIES

- Motorcycle dealers
- Service garages



## WHO CAN APPLY?

Graduates from related *Nitec* feeder courses.  
Please refer to ITE website for the list of courses.

## ESTIMATED SALARY RANGE

\$1,400 - \$2000



## UPON GRADUATION, BE EMPLOYED AS

- Senior Technician
- Team Leader
- Senior Vehicle Inspector





Nitec in



# Beauty & Wellness



## WHY THIS COURSE?

- You are creative and artistic.
- You prefer to meet and work with fascinating people.
- You want to help people look and feel good.
- You are always on the lookout for the latest beauty products and services.
- You want to be an entrepreneur of your own in the hair & beauty industry after graduation.

## POTENTIAL SPONSORING COMPANIES

- Beauty salons
- Nail salons



## WHO CAN APPLY?

Singapore Citizens or Permanent Residents who have completed GCE 'N' or GCE 'O' Level

## ESTIMATED SALARY RANGE

\$1,100 - \$1,200



## UPON GRADUATION, BE EMPLOYED AS

- Beautician
- Beauty Therapist
- Beauty Consultant
- Make-up Artist
- Manicurist and Pedicurist





# Nitec in Hair Fashion & Design



## WHY THIS COURSE?

- You are creative and artistic.
- You enjoy meeting and working with fascinating people.
- You want to help people look and feel good.
- You want to be a hair stylist.

## POTENTIAL SPONSORING COMPANIES

Hair salons

## ESTIMATED SALARY RANGE

\$1,100 – \$1,200



## WHO CAN APPLY?

Singapore Citizens or Permanent Residents who have completed GCE 'N' or GCE 'O' Level



## UPON GRADUATION, BE EMPLOYED AS

- Junior Hairdresser
- Junior Stylist
- Hair Stylist
- Hair Colourist







# Nitec in Built Environment (Mechanical & Electrical Services)



## WHY THIS COURSE?

- You dream to become the “doctor” for buildings of world-class quality.
- You want to acquire the skills of a craftsman who can service the mechanical & electrical parts and systems, such as providing servicing and repair of air-conditioner for households.
- You aspire to be an entrepreneur providing servicing and repair of air-conditioner for households.

## POTENTIAL SPONSORING COMPANIES

Companies providing building management and maintenance services to private residences, offices, hotels, airports and integrated resorts.



## WHO CAN APPLY?

Singapore Citizens or Permanent Residents who have completed GCE ‘N’ or GCE ‘O’ Level

*Applicants for this course must be free from colour appreciation deficiency.*

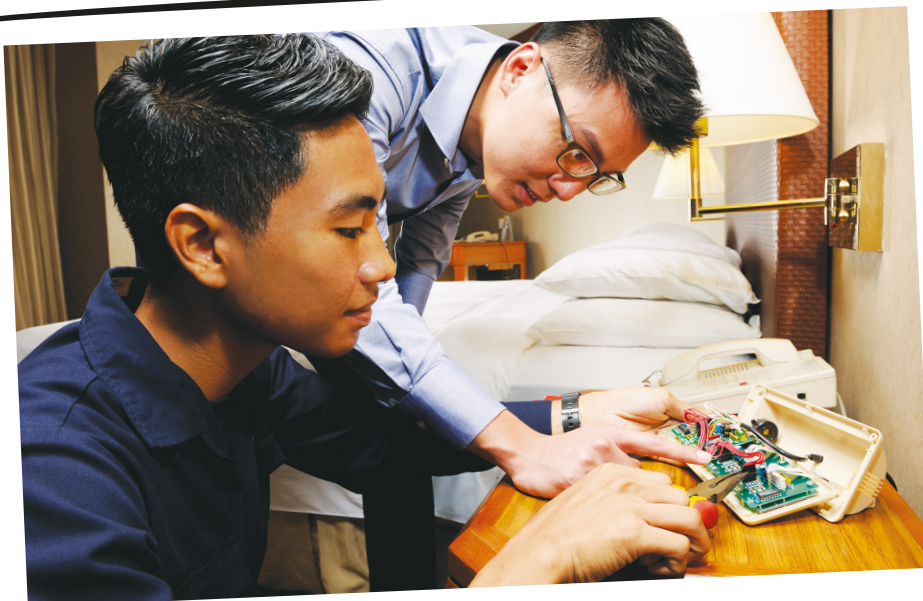
## ESTIMATED SALARY RANGE

\$1,200 – \$1,700



## UPON GRADUATION, BE EMPLOYED AS

- Facilities Technician
- Building Maintenance Technician
- Building Services Technician





Nitec in

# Built Environment (Vertical Transportation)

1/1



## WHY THIS COURSE?

- You believe in high safety standards in lifts and escalators.
- Multi-level industrial and residential buildings are commonly found in land-scarce countries such as Singapore. You dream to become a lift and escalator specialist.

## POTENTIAL SPONSORING COMPANIES

Companies that market, install and/or provide maintenance services for lifts and escalators.



## WHO CAN APPLY?

Singapore Citizens or Permanent Residents who have completed GCE 'N' or GCE 'O' Level

*Applicants for this course must be free from colour appreciation deficiency.*

## ESTIMATED SALARY RANGE

\$1,100 - \$1,200



## UPON GRADUATION, BE EMPLOYED AS

- Lift & Escalator Technician
- Mechanical & Electrical Maintenance Technician
- Facility Maintenance Technician





# Nitec in Lift & Escalator Technology



## WHY THIS COURSE?

- You believe in high safety standards in lifts and escalators.
- Multi-level industrial and residential buildings are commonly found in land-scarce countries such as Singapore. You dream to become a lift and escalator specialist.

## POTENTIAL SPONSORING COMPANIES

Companies providing design, manufacturing, installation and servicing of elevators, escalators and autowalks.

## ESTIMATED SALARY RANGE

\$1,100 - \$1,200



## WHO CAN APPLY?

Singapore Citizens or Permanent Residents with:  
GCE 'O' Level grades in any 2 subjects (Grade 1 - 8)  
or  
GCE 'N' Level passes in English Language and 2 other subjects (Grade A - D or 1 - 5)

*Applicants for this course must ensure that they are free from colour appreciation deficiency.*



## UPON GRADUATION, BE EMPLOYED AS

- Lift & Escalator Technician
- Mechanical & Electrical Maintenance Technician
- Facility Maintenance Technician







## BUSINESS SERVICES

# Nitec in Business Services



### WHY THIS COURSE?

- You are meticulous and wish to learn how to be more organised.
- You prefer to work in an office environment.
- You want opportunities to interact with others and to provide them with business solutions.
- You enjoy helping people and playing a supporting role in corporations.



### WHO CAN APPLY?

Singapore Citizens or Permanent Residents with:  
GCE 'O' Level grades in any 2 subjects  
(Grade 1 – 8)

or

GCE 'N' Level passes in English Language and  
2 other subjects (Grade A – D or 1 – 5)

### POTENTIAL SPONSORING COMPANIES

Companies from all sectors

### ESTIMATED SALARY RANGE

\$1,100 – \$1,400



### UPON GRADUATION, BE EMPLOYED AS

- Administrative Support Assistant
- Customer Service Representative
- Executive Assistant
- Telesales Officer





# Nitec in Retail Services



## WHY THIS COURSE?

- You love to interact with people.
- You wish to work for a business selling the type of product that you are passionate in.
- You enjoy providing excellent service to others.
- You feel thrilled and inspired after convincing others to buy your products, and promote them.
- You are constantly curious and enthusiastic to learn about different products so that you can introduce them to others.

## POTENTIAL SPONSORING COMPANIES

- Retailers
- Supermarket/Drug Stores
- Distributors

## ESTIMATED SALARY RANGE

\$1,200 - \$1,600



## WHO CAN APPLY?

Singapore Citizens or Permanent Residents who have completed GCE 'N' or GCE 'O' Level



## UPON GRADUATION, BE EMPLOYED AS

- Retail Sales Associate
- Retail Assistant
- Customer Service Ambassador



## BUSINESS SERVICES

# Higher Nitec in Service Management



### WHY THIS COURSE?

- You love to interact with people and provide assistance.
- You have a high level of empathy and find joy being an active listener.
- You find meaning in enabling customer success and creating “WOW” customer experience.
- You aim to be a power persuader.

### ESTIMATED SALARY RANGE

\$1,400 – \$1,600



### WHO CAN APPLY?

Singapore Citizens or Permanent Residents with:

GCE ‘O’ Level grades in English Language, Mathematics/Principles of Accounts and 1 other subject

- Grade 1 – 7 in English Language
- Grade 1 – 8 in Mathematics (Elementary/Additional) or Principles of Accounts\*
- Grade 1 – 7 in one other subject.

or

Graduates from related *Nitec* feeder courses.  
Please refer to ITE website for the list of courses.

*\*To be eligible for selection, you must have sat for Mathematics (Elementary/Additional).*

### POTENTIAL SPONSORING COMPANIES

Companies from various industries like telecommunications, hospitality, transport, IT, retail and other corporate businesses.



### UPON GRADUATION, BE EMPLOYED AS

- Customer Service Representative
- Customer Service Agent
- Contact Centre Agent
- Customer Care Representative







# Nitec in Visual Communication



## WHY THIS COURSE?

- You have an eye for beautiful pictures.
- You are keen to learn how to use images to tell a story.
- You are able to illustrate and transform what you see into 2D or 3D visuals.
- You are excited when you see your created visuals are liked and understood by others.

## POTENTIAL SPONSORING COMPANIES

- Companies with marketing communications needs
- Creative agencies
- Advertising firms
- Internet and software development companies



## WHO CAN APPLY?

Singapore Citizens or Permanent Residents with:  
GCE 'O' Level grades in any 2 subjects  
(Grade 1 – 8)

or

GCE 'N' Level passes in English Language and  
2 other subjects (Grade A – D or 1 – 5)

*Applicants for this course must ensure that they are free from colour appreciation deficiency.*

## ESTIMATED SALARY RANGE

\$1,200 – \$1,500



## UPON GRADUATION, BE EMPLOYED AS

- Graphic Artist
- Graphic Designer
- Digital Artist
- Illustrator
- Assistant Photographer





## HEALTH CARE

# ITE Skills Certificate in Health Care



### WHY THIS COURSE?

- You have a strong calling to help others in improving their quality of life.
- You have a heart for the seniors and those who are ill.
- You aspire to contribute to Singapore's world-class health care industry.

### ESTIMATED SALARY RANGE

\$1,100 – \$1,200



### WHO CAN APPLY?

Singapore Citizens or Permanent Residents who have completed GCE 'N' Level

### POTENTIAL SPONSORING COMPANIES

- Nursing Homes



### UPON GRADUATION, BE EMPLOYED AS

- Health care Assistant



For general enquiries on the course,  
Contact: Chung\_Woon\_Heng@ite.edu.sg or 6590 2437

# Nitec in Dental Assisting



### WHY THIS COURSE?

- You wish to help patients improve their appearance and boost their self confidence during their dental treatments.
- You aspire to contribute to Singapore's world-class health care industry.

### ESTIMATED SALARY RANGE

\$1,100 – \$1,800



### WHO CAN APPLY?

Singapore Citizens or Permanent Residents with:

GCE 'O' Level grades in any 2 subjects (Grade 1 – 8)

or

GCE 'N' Level passes in English Language and 2 other subjects (Grade A – D or 1 – 5)

### POTENTIAL SPONSORING COMPANIES

- Dental clinics



### UPON GRADUATION, BE EMPLOYED AS

- Dental Assistant



For general enquiries on the course,  
Contact: Yeo\_Yin\_Yin@ite.edu.sg or 6590 2434



# Nitec in Dental Technology



## WHY THIS COURSE?

- You wish to help patients improve their appearance, boost their self-confidence or restore the ability to eat with ease.
- You have hands of a craftsman and are interested to transform teeth molds into dentures.
- You aspire to contribute to Singapore's world-class health care industry.

## POTENTIAL SPONSORING COMPANIES

- Dental clinics

## ESTIMATED SALARY RANGE

\$1,100 - \$1,400



## WHO CAN APPLY?

Singapore Citizens or Permanent Residents with:  
GCE 'O' Level grades in any 2 subjects  
(Grade 1 – 8)

or

GCE 'N' Level passes in Mathematics and 2 other  
subjects (Grade A – D or 1 – 5)



## UPON GRADUATION, BE EMPLOYED AS

- Dental Technician





Nitec in

# Community Care & Social Services



## WHY THIS COURSE?

- You love to extend your helping hands to others in need and want to do your part for the society.
- You love to interact with clients/ patients for consultation and have the ability to empathise and listen to client's request and comments.
- You aspire to contribute to Singapore's world-class health care industry.

## POTENTIAL SPONSORING COMPANIES

- Day Care and Senior Activity Centres
- Community Hospitals
- Rehabilitation Centres

## ESTIMATED SALARY RANGE

\$1,200 – \$1,650



## WHO CAN APPLY?

Singapore Citizens or Permanent Residents with:  
GCE 'O' Level grades in any 2 subjects (Grade 1 – 8)

or

GCE 'N' Level passes in Mathematics or Science\* and 2 other subjects (Grade A-D or Grade 1-5)

*\*Mobile Robotics and Smart Electrical Technology subjects can be used in lieu of Science for admission to this Nitec course.*

**Note: 2 years relevant working experience is required.**



## UPON GRADUATION, BE EMPLOYED AS

- Social Service Assistant
- Therapist Aide
- Assistant Programme Coordinator







# Nitec in Hospitality Operations



## WHY THIS COURSE?

- You have a chance to meet and interact with people from all walks of life.
- You find great satisfaction in giving “WOW” customer experience.

## ESTIMATED SALARY RANGE

\$1,400 - \$2,000



## WHO CAN APPLY?

Singapore Citizens or Permanent Residents with:  
GCE ‘O’ Level grades in any 2 subjects  
(Grade 1 – 8)

or

GCE ‘N’ Level passes in English Language and  
2 other subjects (Grade A – D or 1 – 5)

## POTENTIAL SPONSORING COMPANIES

- Established hotels
- Restaurants



## UPON GRADUATION, BE EMPLOYED AS

- F&B Captain
- Bell Captain
- Guest Service Agent
- Mixologist
- Barista
- Commis Sommelier





Nitec in

# Asian Culinary Arts



## WHY THIS COURSE?

- You want to share your love for food.
- You are motivated when someone enjoys the meal you prepared.
- You are creative and want to discover new flavour horizons and develop your own recipe.
- You aspire to become a master chef.

## POTENTIAL SPONSORING COMPANIES

- Asian restaurants



## WHO CAN APPLY?

Singapore Citizens or Permanent Residents who have completed GCE 'N' or GCE 'O' Level

## ESTIMATED SALARY RANGE

\$1,400 - \$2,000



## UPON GRADUATION, BE EMPLOYED AS

- Commis Cook





# Nitec in Western Culinary Arts



## WHY THIS COURSE?

- You want to share your love for food.
- You are motivated when someone enjoys the meal you prepared.
- You are creative and want to discover new flavour horizons and develop your own recipe.
- You aspire to become a master chef.

## POTENTIAL SPONSORING COMPANIES

- Western Restaurants
- Established hotels

## ESTIMATED SALARY RANGE

\$1,400 - \$2,000



## UPON GRADUATION, BE EMPLOYED AS

- Commis Cook



## WHO CAN APPLY?

Singapore Citizens or Permanent Residents with:

GCE 'O' Level grades in any 2 subjects  
(Grade 1 - 8)

or

GCE 'N' Level passes in Mathematics and  
2 other subjects (Grade A - D or 1 - 5)





Nitec in

# Infocomm Technology



## WHY THIS COURSE?

- Interested in IoT, AI, AR/VR? You aspire to be at the frontier of cutting-edge technologies.
- You are excited to create solutions based on logic and facts.
- You love to code and program to facilitate communication between humans and machines, and to unscramble complex problems into simple step solutions.



## WHO CAN APPLY?

Singapore Citizens or Permanent Residents with:

GCE 'O' Level grades in any  
2 subjects (Grade 1 – 8)

or

GCE 'N' Level passes in Mathematics  
or Science\* and 2 other subjects  
(Grade A – D or 1 – 5)

*\*Mobile Robotics and Smart Electrical Technology  
subjects can be used in lieu of Science for  
admission to this Nitec course.*

## POTENTIAL SPONSORING COMPANIES

Private and public sector organisations in all industries, ranging from telecommunications, manufacturing, retail, government, education and even health care and insurance.

## ESTIMATED SALARY RANGE

\$1,100 – \$1,700



## UPON GRADUATION, BE EMPLOYED AS

- Info-Comms Technician
- Technical Support Associate
- Associate Systems Administrator
- Computer Technician







# Nitec in Fabrication Technology

(Hull & Structures)



## WHY THIS COURSE?

- You are curious about aquatic vessels.
- You like to be involved in designing and constructing vessel parts.
- You are keen to be the next generation of shipbuilders.
- You are curious about how big vessels are assembled.

## POTENTIAL SPONSORING COMPANIES

Shipyards



### UPON GRADUATION, BE EMPLOYED AS

- Steel Fabricator
- Technical Associate



# Nitec in Fabrication Technology

(Marine Pipe)

## ESTIMATED SALARY RANGE

\$1,100 - \$1,300



## WHO CAN APPLY?

Singapore Citizens or Permanent Residents who have completed GCE 'N' or GCE 'O' Level



### UPON GRADUATION, BE EMPLOYED AS

- Pipe Fabricator
- Technical Associate





# Nitec in Marine Technology



## WHY THIS COURSE?

- You are curious about aquatic vessels.
- You like to be involved in designing and constructing vessel parts.
- You are keen to be the next generation of shipbuilders.
- You are curious about how big vessels are assembled.

## POTENTIAL SPONSORING COMPANIES

Shipyards



## WHO CAN APPLY?

Singapore Citizens or Permanent Residents who have completed GCE 'N' or GCE 'O' Level



## UPON GRADUATION, BE EMPLOYED AS

- Marine Mechanic
- Technical Associate

# Nitec in Marine Electrical Technology



## WHY THIS COURSE?

- You are curious about aquatic vessels.
- You dream to become the "doctor" on the electric system for world's largest watercraft.
- You are excited about how electrical systems in vessels are being assembled.

## POTENTIAL SPONSORING COMPANIES

Companies in marine and offshore industry



## WHO CAN APPLY?

Singapore Citizens or Permanent Residents with:

GCE 'O' Level grades in any 2 subjects (Grade 1 - 8)

or

GCE 'N' Level passes in Mathematics and 2 other subjects (Grade A - D or 1 - 5)



## UPON GRADUATION, BE EMPLOYED AS

- Technical Associate

## ESTIMATED SALARY RANGE

\$1,100 - \$1,300



# Higher Nitec in Marine & Offshore Technology



## WHY THIS COURSE?

- You are curious about ships, vessels and offshore structures.
- You dream to become the “doctor” for world’s largest watercraft.
- You want to know how oil rigs are assembled together.
- You have a passion in learning the latest technology for marine fabrication.

## POTENTIAL SPONSORING COMPANIES

Shipyards

## ESTIMATED SALARY RANGE

\$1,100 – \$1,400



## WHO CAN APPLY?

Singapore Citizens or Permanent Residents with:

GCE ‘O’ Level grades (Grade 1 - 8) in English Language and a relevant Science subject, and (Grade 1 - 7) in Mathematics (Elementary/ Additional)

or

Graduates from relevant Nitec feeder courses.  
Please refer to ITE website for more details.



## UPON GRADUATION, BE EMPLOYED AS

- Assistant Supervisor
- Trainee Supervisor
- Assistant Marine Supervisor
- Foreman

## NOTES

[illegible]



[illegible]

# How to **Apply**

## For More Info

☎ 1800 2222 111 or  
6590 2399

✉ ibt@ite.edu.sg

Scan our QR code for  
more details of ITE  
traineeship courses




Interested applicants may apply online at **www.ite.edu.sg** during the application period.


All applicants are required to attend a compulsory pre-interview session at ITE before proceeding to the selection interview by sponsoring companies.

Alternatively, visit the **Customer & Visitor Centre** at ITE Headquarters, 2 Ang Mo Kio Drive during the application period. Refer to [www.ite.edu.sg](http://www.ite.edu.sg) for more details.





 Customer & Visitor Centre, ITE Headquarters  
Block A, Level 2  
2 Ang Mo Kio Drive  
Singapore 567720

 1800 2222 111

 [ibt@ite.edu.sg](mailto:ibt@ite.edu.sg)